




4. PRODUCT SPECIFICATIONS

Model		Elecstor-ECO		
 12 000 Milliampere hours	Rated working Voltage	100~240Vac/50-60Hz		
	Output Power (Max.)	18W		
 18 Watts	Output	USB Interface	DC Interface	
	Output voltage (Selectable)	5Vdc	9Vdc	12Vdc
	Output polarity	Standard		- - G - +
 38 Watt-Hours	Output power & current	2.0A/10W	1.0A/9W	1.0A/12W
	QTY. & battery capacity	12000mAh (38.4Wh)		
	Unit dimensions (mm)	160*105*36,5		
	Net weight	0,5		
Performance environment		Temperature 0°C~40°C, Humidity 20%~90%		
Noise Level		Less than 40dB		

- * Products specifications are subject to change without notice.
- * To ensure the safety of transportation, the battery is not fully charged when leaving the factory. Please charge it before use.

⚠ WARNING

Please ensure that the **COMBINED POWER DRAW** of the connected devices **DOES NOT EXCEED 18W**. The **MAXIMUM OUTPUT** of the connected devices must never under any circumstances exceed the **Elecstor-ECO** design limit of **18W**

To determine the amount of power demand in **Watts (W)**, look on the unit's marking plate (Generally located on the products power adapter or on the rear of the product. Take the **Volatage (V)** and multiply it by the **Amperage (A)** to dermine the **Wattage (W)**

FORMULA EXAMPLE
6V x 2A = 12W

CAUTION: If the combined powerdraw of the connected devices exceeds **18W**, then it may cause damage to the **ELECSTOR-ECO**

- * Before connecting a device, ensure that the voltage of the loads corresponds to the selected voltage on the UPS.
- * Ensure that the device is fully charged before initial use.
- * Warranty will be voided in cases where the unit has been dropped, hit, disassembled, or privately repaired.
- * Keep away from water. Device is not waterproof.
- * Keep away from flammable environments.
- * Keep away from heat and fire.
- * Keep out of reach of children.

3



ELECSTOR-ECO

18W Mini DC UPS - 12000 mAh- 38WH

USER MANUAL

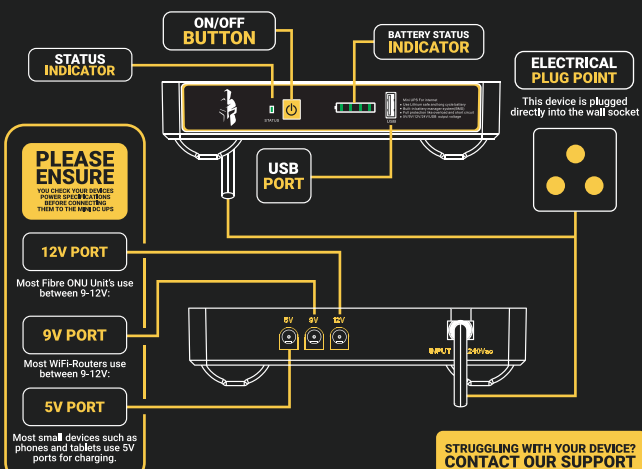


Thank you for choosing the ELECSTOR-ECO

Before operating this unit, please read the USER MANUAL carefully to get the most out of the device.

ALWAYS CHECK THE VOLTAGE, CURRENT AND POLARITY OF YOUR DEVICE IN ORDER TO SELECT THE CORRECT CORRESPONDING VOLTAGE WHEN CONNECTING TO THE UPS.

1. DEVICE DESCRIPTION



ELECSTOR-ECO SYSTEM

MINI DC UPS:



PERFECT FOR NETWORKING DEVICES AND FOR KEEPING YOUR PHONE CHARGED DURING AN OUTAGE

PORTABLE POWER STATIONS



AVAILABLE IN 100W, 300W AND 500W PORTABLE POWER STATIONS

RECHARGABLE LOADSHEDDING GLOBES



PERFECT FOR KEEPING THE LIGHTS ON DURING A POWER OUTAGE

1

2. PRODUCT FEATURES

1. Device contains a high-capacity Lifep04 Lithium battery.
2. Ports are highly compatible/ suitable for most digital products.
3. 5V USB Output for charging devices
5. Intelligent circuit design with over-charging, over-discharging and short circuit protection.
6. Built in adapter allows wide AC voltage range (85~265Vac).

3. PRODUCT INSTRUCTIONS

1. Please fully charge the device before first use by plugging the device into a wall socket.
2. To switch on the device, press and hold the (I/O) power button for 3 seconds.
 - Once the device is connected to a power source the status light will turn green.
 - When the device is charging the battery indicator lights will begin to flash.
 - When the device is fully charged the battery indicator lights will stop flashing.
 - The battery status indicator represents 25%, 50%, 75% and 100% battery life.
 - When the device is disconnected from a power source the STATUS LIGHT will turn red which indicates that the device has now entered backup power mode and will begin draining the onboard batteries to provide backup power
 - Once the device reaches 25% battery life the status light will begin flashing: This indicates that the device's battery is critically low.
3. This device includes 5V, 9V and 12V DC output ports, to correspond with the input of various devices
 - Please ensure that the total power of all connected devices DOES NOT EXCEED the maximum power output 18W
 - If the 18W power output limit is exceeded, the USB port will malfunction, and the status light will flash yellow.
4. To power a router and fibre ONU, or any other device from the DC ports – plug the single end of the splitter cable into one of the 5V/9V/12V DC output ports.

Plug the other end of the splitter cable into the DC ports on the router and fibre box. Adapters are included to match the different input port sizes on different devices.
5. When using the USB port, connect your device to the front of the unit.
6. The Mini DC UPS will shut down automatically when the battery is low. Once the power is restored the device will automatically turn itself back on and begin to recharge until the battery until full.
7. When this device is not in use, ensure that it is fully charged and stored in a cool, dry place. To ensure that the battery does not degrade it is recommended to recharge the device once per month when not in use.

2